

# KAILANT

GRAND CAYMAN

FLOORPLANS AND INVESTMENT OPPORTUNITIES

**CURIO**  
COLLECTION  
BY HILTON™

**NCB**  
Group

**THE CAYMAN ISLANDS' RICH  
MARITIME HISTORY HAS LONG BEEN  
ENCHANTING AND SUSTAINING  
GENERATIONS OF WORLDLY  
TRAVELLERS VISITING ITS SHORES.  
IT'S THIS SAME EXPERIENCE KAILANI  
STRIVES TO CREATE FOR EACH GUEST  
THAT VISITS THE HOTEL.**

Every aspect of the hotel has been designed to meet the needs of today's luxury traveller, who seeks an experience authentic to the very place they have come to explore.

Rich global influences come together in a curated collection of unique interior design details. Set against a backdrop

---

of modern architecture infused with materials sourced from the local landscape and shaped by the Caribbean Sea that is visible from every viewpoint.

Revered culinary offerings cultivate an environment with sustainability at its core. Rotational menus inspired by cultures both near and far brim with local flair, and centre around a farm to table ideology.

A true respite for the business or wellness traveller, Kailani's unique and tailored wellness programme is designed to support holistic wellbeing, and is signature to the hotel.

**FIRST FLOOR**



**SILVER THATCH**  
2 BDR EXECUTIVE CONDO VERSION 1  
MAIN FLOOR / OCEANFRONT

**SILVER THATCH**  
2 BDR EXECUTIVE CONDO VERSION 2  
MAIN FLOOR / OCEANFRONT

**ORCHID\***  
3 BDR EXECUTIVE CONDO W/ POOL VERSION 1  
OCEANFRONT

\*Designed for year-round residency

# SECOND FLOOR



**SILVER THATCH**  
 2 BDR EXECUTIVE CONDO VERSION 1  
 2ND FLOOR / OCEANFRONT

**SILVER THATCH**  
 2 BDR EXECUTIVE CONDO VERSION 2  
 2ND FLOOR / OCEANFRONT

**ORCHID\***  
 3 BDR EXECUTIVE CONDO VERSION 2  
 OCEANFRONT

**SEA GRAPE**  
 SUITE VERSION 1  
 LATERAL OCEAN VIEW

**JASMINE**  
 3 BDR LOCK-OFF SUITE  
 LATERAL OCEAN VIEW

**SEA GRAPE**  
 SUITE VERSION 2  
 OCEAN VIEW

**SEA GRAPE**  
 SUITE VERSION 1  
 OCEAN VIEW

**SEA GRAPE**  
 STUDIO  
 OCEAN VIEW

**JASMINE**  
 2 BDR LOCK-OFF SUITE  
 OCEAN VIEW

\*Designed for year-round residency

# THIRD FLOOR



**ORCHID\***  
 3 BDR EXECUTIVE CONDO VERSION 2  
 OCEANFRONT

**JASMINE**  
 3 BDR LOCK-OFF SUITE  
 LATERAL OCEAN VIEW

**SEA GRAPE**  
 SUITE VERSION 1  
 OCEAN VIEW

**SEA GRAPE**  
 SUITE VERSION 1  
 LATERAL OCEAN VIEW

**SEA GRAPE**  
 SUITE VERSION 2  
 OCEAN VIEW

**SEA GRAPE**  
 STUDIO  
 OCEAN VIEW

**JASMINE**  
 2 BDR LOCK-OFF SUITE  
 OCEAN VIEW

\*Designed for year-round residency

# FOURTH FLOOR



ROYAL PALM\*  
 PENTHOUSE VERSION 1 W/ POOL  
 OCEANFRONT

JASMINE  
 3 BDR LOCK-OFF SUITE  
 LATERAL OCEAN VIEW

SEA GRAPE  
 SUITE VERSION 1  
 OCEAN VIEW

SEA GRAPE  
 SUITE VERSION 1  
 LATERAL OCEAN VIEW

SEA GRAPE  
 SUITE VERSION 2  
 OCEAN VIEW

SEA GRAPE  
 STUDIO  
 OCEAN VIEW

JASMINE  
 2 BDR LOCK-OFF SUITE  
 OCEAN VIEW

\*Designed for year-round residency

**FIFTH FLOOR**



ROYAL PALM\*  
PENTHOUSE VERSION 2  
OCEANFRONT

JASMINE  
3 BDR LOCK-OFF SUITE  
LATERAL OCEAN VIEW

SEA GRAPE  
SUITE VERSION 1  
OCEAN VIEW

SEA GRAPE  
SUITE VERSION 1  
LATERAL OCEAN VIEW

SEA GRAPE  
SUITE VERSION 2  
OCEAN VIEW

SEA GRAPE  
STUDIO  
OCEAN VIEW

JASMINE  
2 BDR LOCK-OFF SUITE  
OCEAN VIEW

\*Designed for year-round residency

# SIXTH FLOOR



ROYAL PALM\*  
 PENTHOUSE VERSION 3 W/ POOL  
 OCEANFRONT

JASMINE  
 3 BDR LOCK-OFF SUITE  
 LATERAL OCEAN VIEW

SEA GRAPE  
 SUITE VERSION 1  
 OCEAN VIEW

SEA GRAPE  
 SUITE VERSION 1  
 LATERAL OCEAN VIEW

SEA GRAPE  
 SUITE VERSION 2  
 OCEAN VIEW

SEA GRAPE  
 STUDIO  
 OCEAN VIEW

JASMINE  
 2 BDR LOCK-OFF SUITE  
 OCEAN VIEW

\*Designed for year-round residency

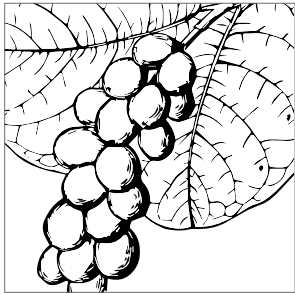


SEVENTH FLOOR



# SELECT YOUR SUITE

SEA GRAPE



STUDIO  
314 - 433 sq. ft.

SUITE VERSION 1  
591 - 682 sq. ft.

SUITE VERSION 1  
591 - 682 sq. ft.

SUITE VERSION 2  
868 - 871 sq. ft.

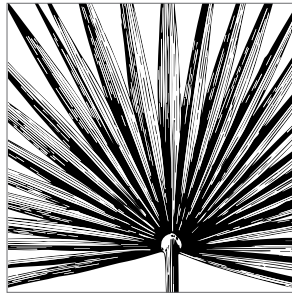
JASMINE



2 BDR LOCK-OFF SUITE  
999 - 1,238 sq. ft.

3 BDR LOCK-OFF SUITE  
1,775 - 1,862 sq. ft.

SILVER THATCH



2 BDR EXECUTIVE  
CONDO VERSION 1  
2,162 - 2,182 sq. ft.

2 BDR EXECUTIVE  
CONDO VERSION 2  
2,388 sq. ft.

# RESERVE YOUR RESIDENCE

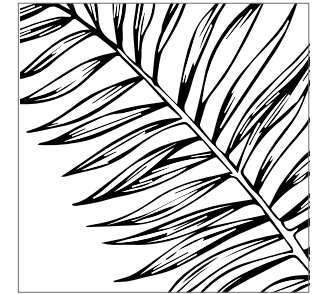
ORCHID\*



3 BDR EXECUTIVE  
CONDO VERSION 1  
3,107 sq. ft.

3 BDR EXECUTIVE  
CONDO VERSION 2  
2,723 - 2,743 sq. ft.

ROYAL PALM\*



PENTHOUSE VERSION 1  
3,958 sq. ft.

PENTHOUSE VERSION 2  
3,864 sq. ft.

PENTHOUSE VERSION 3  
3,430 sq. ft.

\*Designed for year-round residency



# SEA GRAPE

STUDIO AND SUITES

314 - 871 sq. ft.

---

Within the Sea Grape collection, there are several floorplans available to meet a variety of accommodation needs. From studios to spacious suites, this collection makes the most of the interior space by creating functional and flexible rooms that can easily be enjoyed day or night.

The larger suites provide expanded areas throughout the room, including a larger bathroom and bedroom which accommodates a seating area and workspace. Variations between the suites are based on bed type e.g. a king bed or two queen beds.

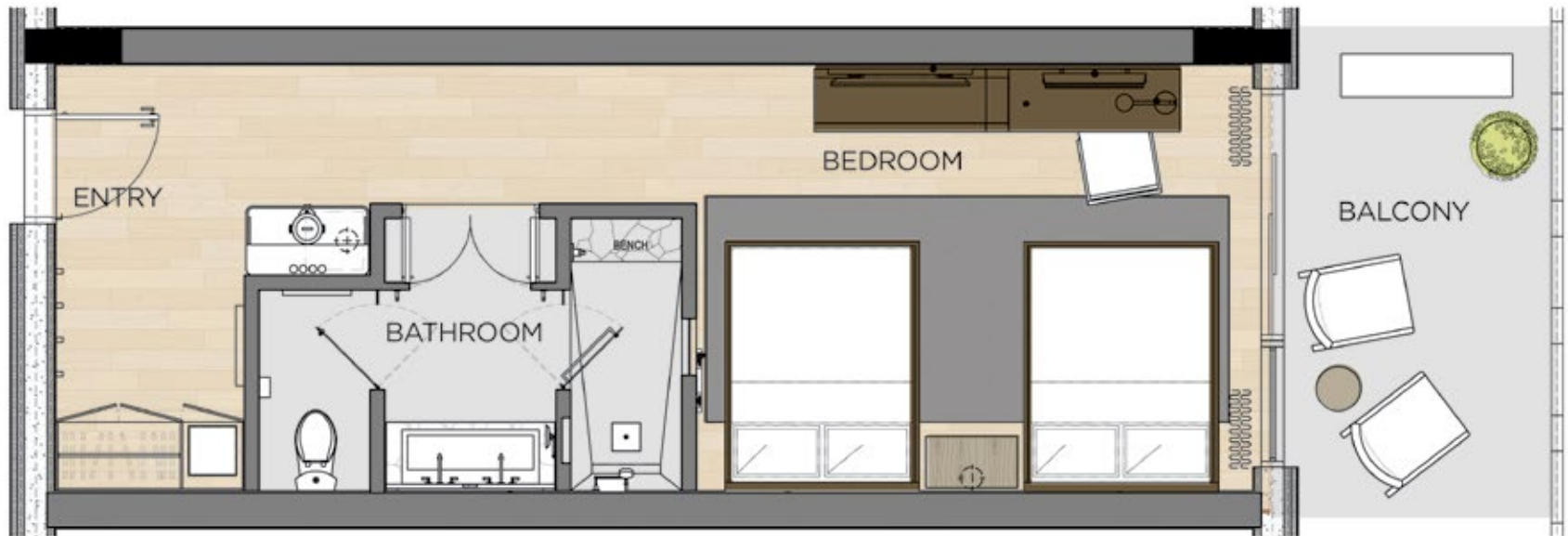
# SEA GRAPE STUDIO



SEA GRAPE SUITE 1



# SEA GRAPE SUITE 2



**SEA GRAPE SUITE 3**

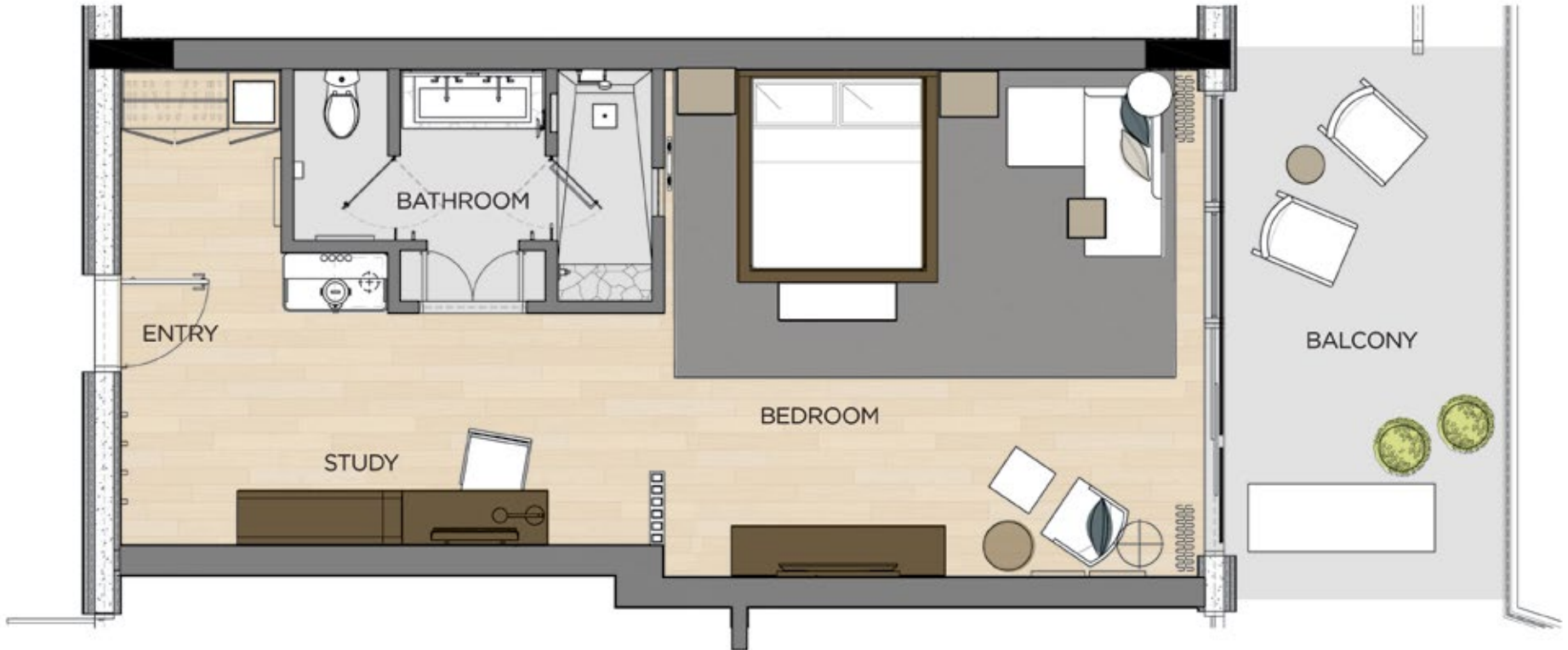


SEA GRAPE SUITE 4





**SEA GRAPE SUITE 5**







# JASMINE

## LOCK-OFF SUITES

999 - 1,862 sq. ft

---

The Jasmine collection of two and three-bedroom suites offers a unique feature in that owners can choose to lock-off one of the bedrooms, creating a separate suite that can be rented out.

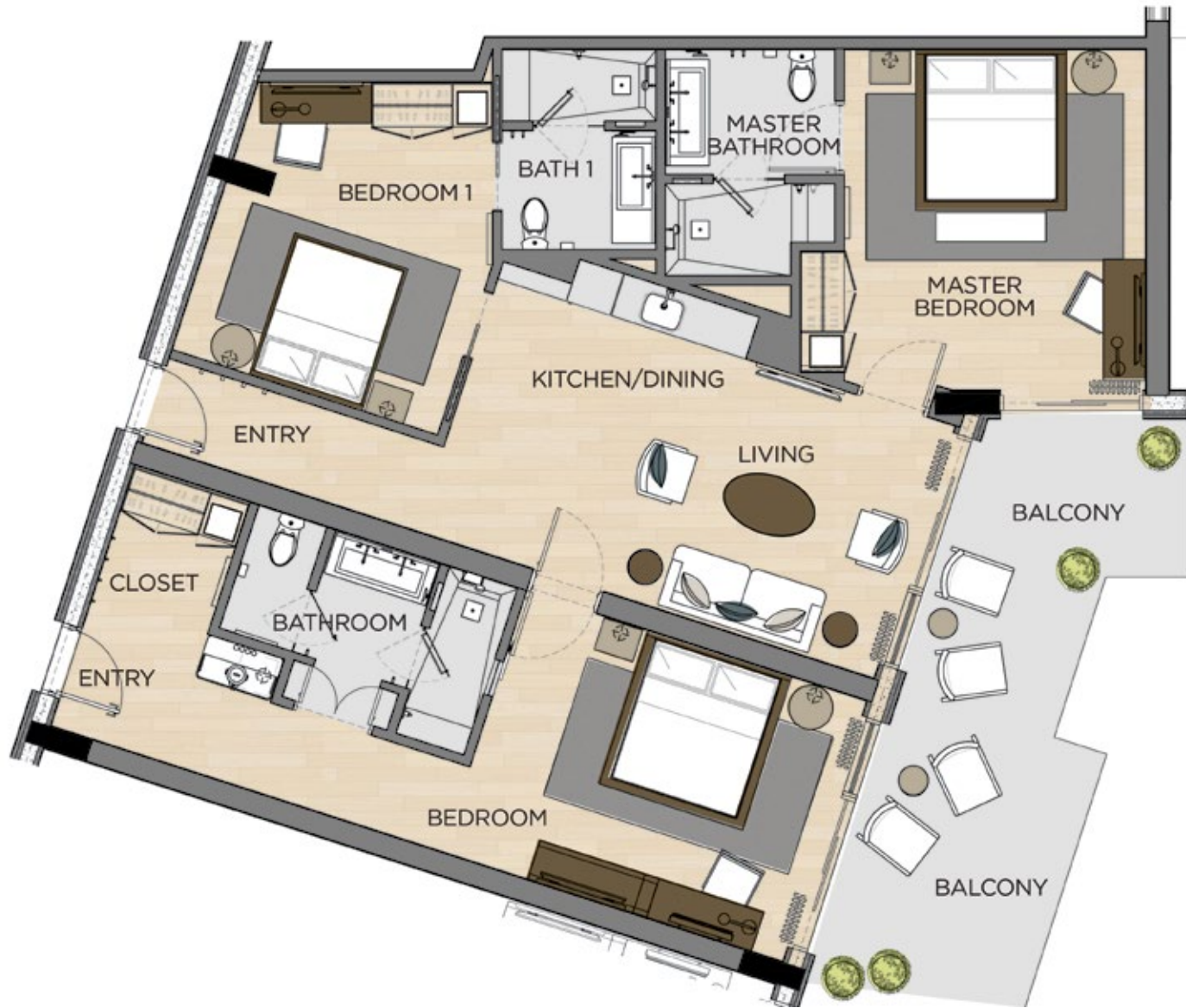
So, the two-bedroom Jasmine suite can either be rented out as just that or the rooms can be locked-off to create two functional hotel suites, increasing the rental income and providing a versatile accommodation option.

The three-bedroom lock-off suite can either be used as a three-bedroom suite or locked-off to create a one-bedroom unit and a two-bedroom suite.

# JASMINE 2 BDR LOCK-OFF SUITE



# JASMINE 3 BDR LOCK-OFF SUITE





# SILVER THATCH

2 BEDROOM EXECUTIVE CONDO  
2,162 - 2,388 sq. ft

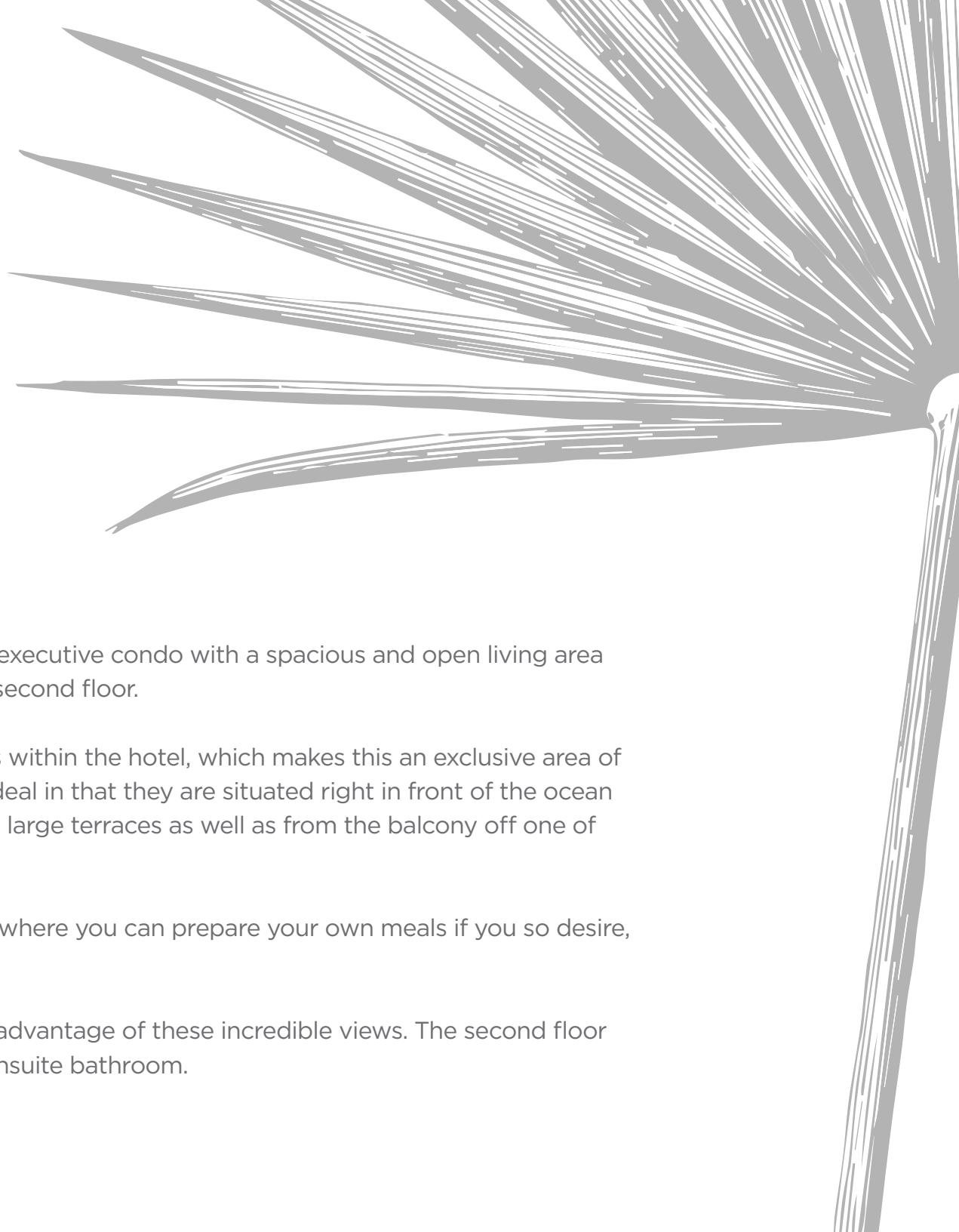
---

Silver Thatch is a two-bedroom, two-storey executive condo with a spacious and open living area on the first floor and two bedrooms on the second floor.

There are only three of these executive units within the hotel, which makes this an exclusive area of the property. The location of these units is ideal in that they are situated right in front of the ocean with stunning views from the living area and large terraces as well as from the balcony off one of the bedrooms.

The main floor has a fully-equipped kitchen where you can prepare your own meals if you so desire, with ocean views from the kitchen's island.

The entire living space is orientated to take advantage of these incredible views. The second floor has two spacious bedrooms, each with an ensuite bathroom.

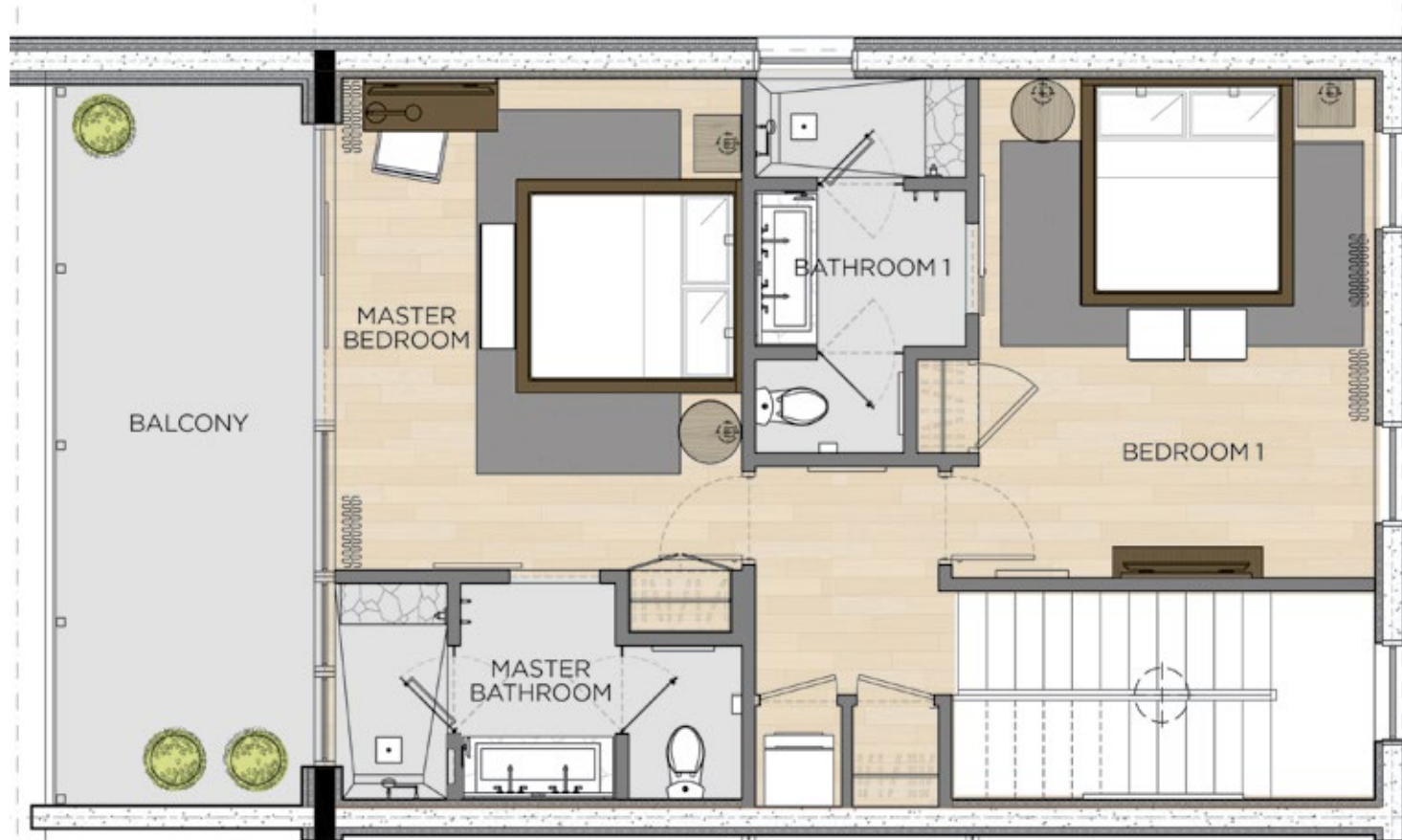


**SILVER THATCH 2 BDR EXECUTIVE CONDO 1 / MAIN FLOOR**

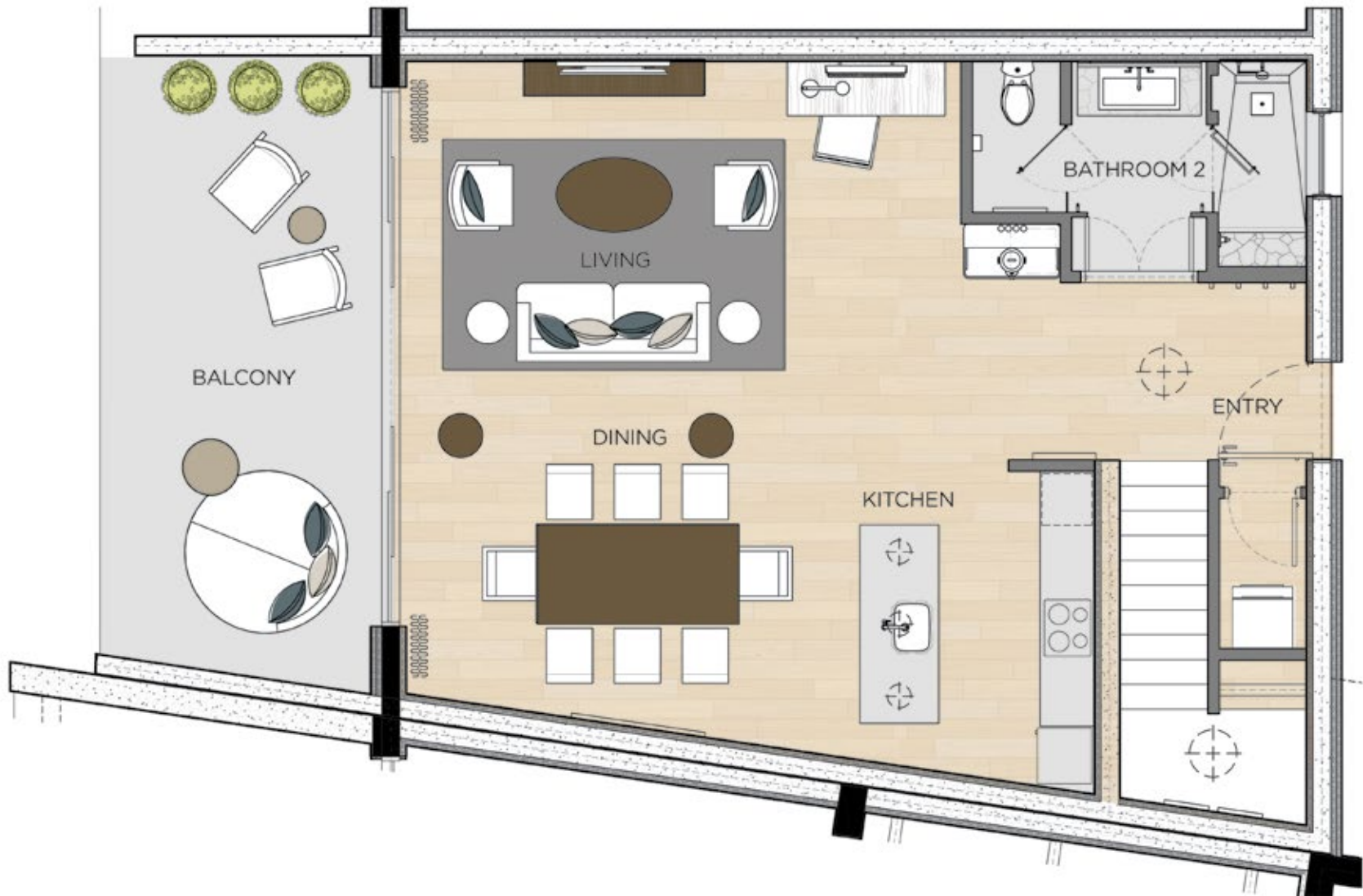




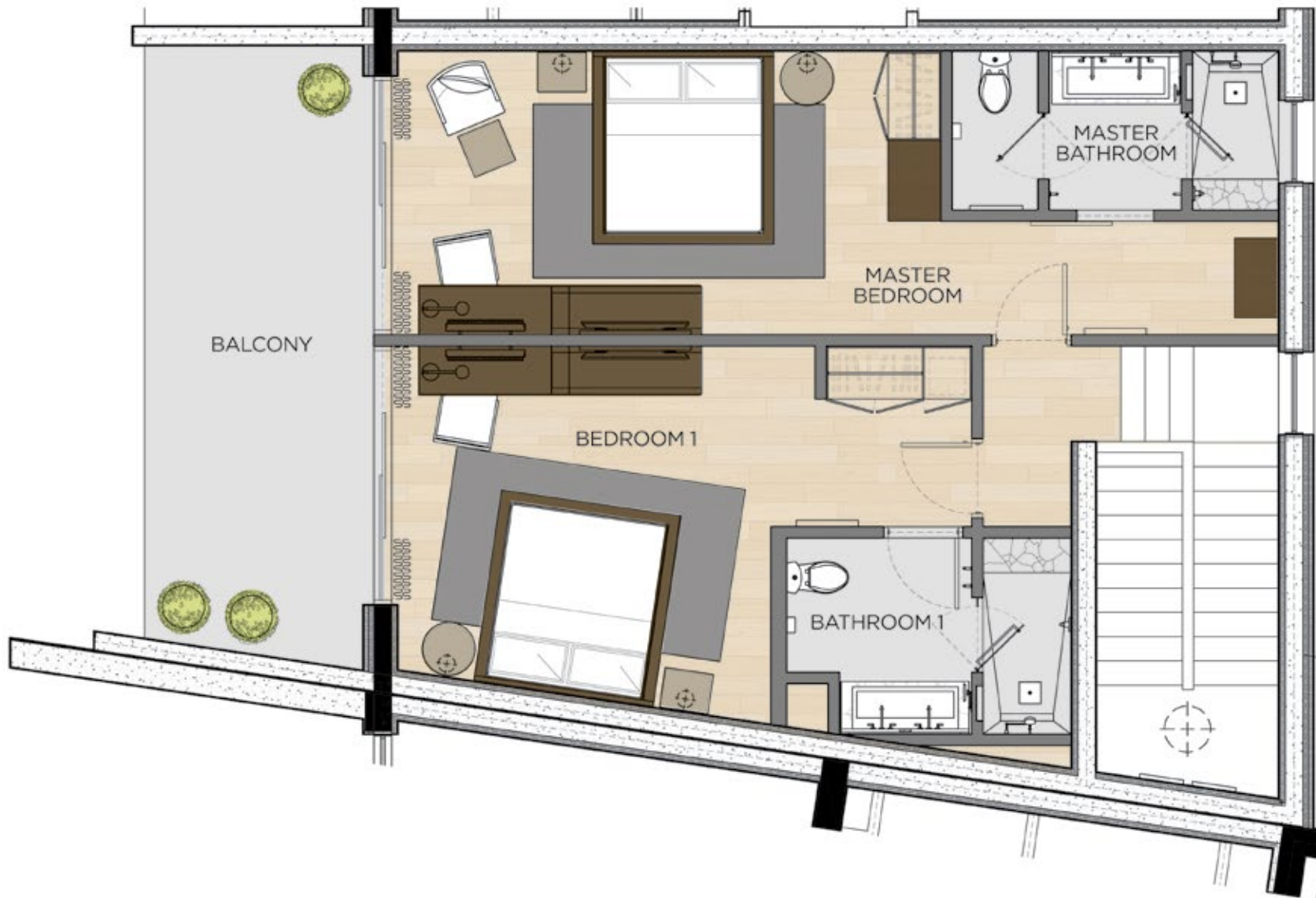
**SILVER THATCH 2 BDR EXECUTIVE CONDO 1 / SECOND FLOOR**



SILVER THATCH 2 BDR EXECUTIVE CONDO 2 / MAIN FLOOR



SILVER THATCH 2 BDR EXECUTIVE CONDO 1 / SECOND FLOOR







**LIVE AT KAILANI**

# RESIDENCES

## LIVE AT A CURIO COLLECTION HOTEL

---

A unique ownership opportunity exists at Kailani, as a select number of three-bedroom units have been specifically designed as full-time residences.

Setting a new standard in hotel-inspired living in Cayman, premium concierge services and security, state-of-the-art health, fitness and wellbeing facilities, a business centre, and some of the best fine dining and local fare on island are part and parcel of living at Kailani.

Treat visitors to dinner at one of our in-house eateries or choose to meet your colleagues for a cocktail at the bar, a short commute from the financial hubs of George Town and Camana Bay. With your personal oasis only steps away to retreat and relax, on the weekend jump straight into the Caribbean Sea or partake in a rooftop yoga class when you want to revive your soul.

In addition to stunning ocean views, a private pool and/or wraparound terraces, all of Kailani's amenities and services are also available to full-time residents, including a luxurious spa which spans the entire seventh floor.



# ORCHID

3 BEDROOM EXECUTIVE CONDO FOR FULL-TIME RESIDENCE  
2,723 – 3,107 sq. ft.

---

The Orchid collection consists of an extremely spacious three-bedroom floorplan with an abundance of space to enjoy during the day and evening.

There are only three of these floorplans within the hotel which provide an exclusive offering to residents requiring more space, on one level. Overlooking the turquoise waters of the ocean, picturesque views are available from an expansive terrace that wraps around almost the entire unit, providing the perfect place to enjoy a morning cup of coffee or watch Cayman's famous and unbelievably beautiful sunsets with a glass of wine.

The open floorplan consists of a large kitchen and living area with three incredibly spacious bedrooms with ensuite bathrooms.

Version 1 of the Orchid collection is located on the first floor of the hotel and features a private pool on the terrace. Version 2 is located on the second and third floors and has incredible views of the ocean from its large balconies.

# ORCHID 3 BDR EXECUTIVE CONDO WITH POOL 1



\*Furniture not included in full-time residences. For illustrative purposes only.



# ORCHID 3 BDR EXECUTIVE CONDO 2



\*Furniture not included in full-time residences. For illustrative purposes only.



# ROYAL PALM

PENTHOUSE FOR FULL-TIME RESIDENCE  
3,430 - 3,958 sq. ft

---

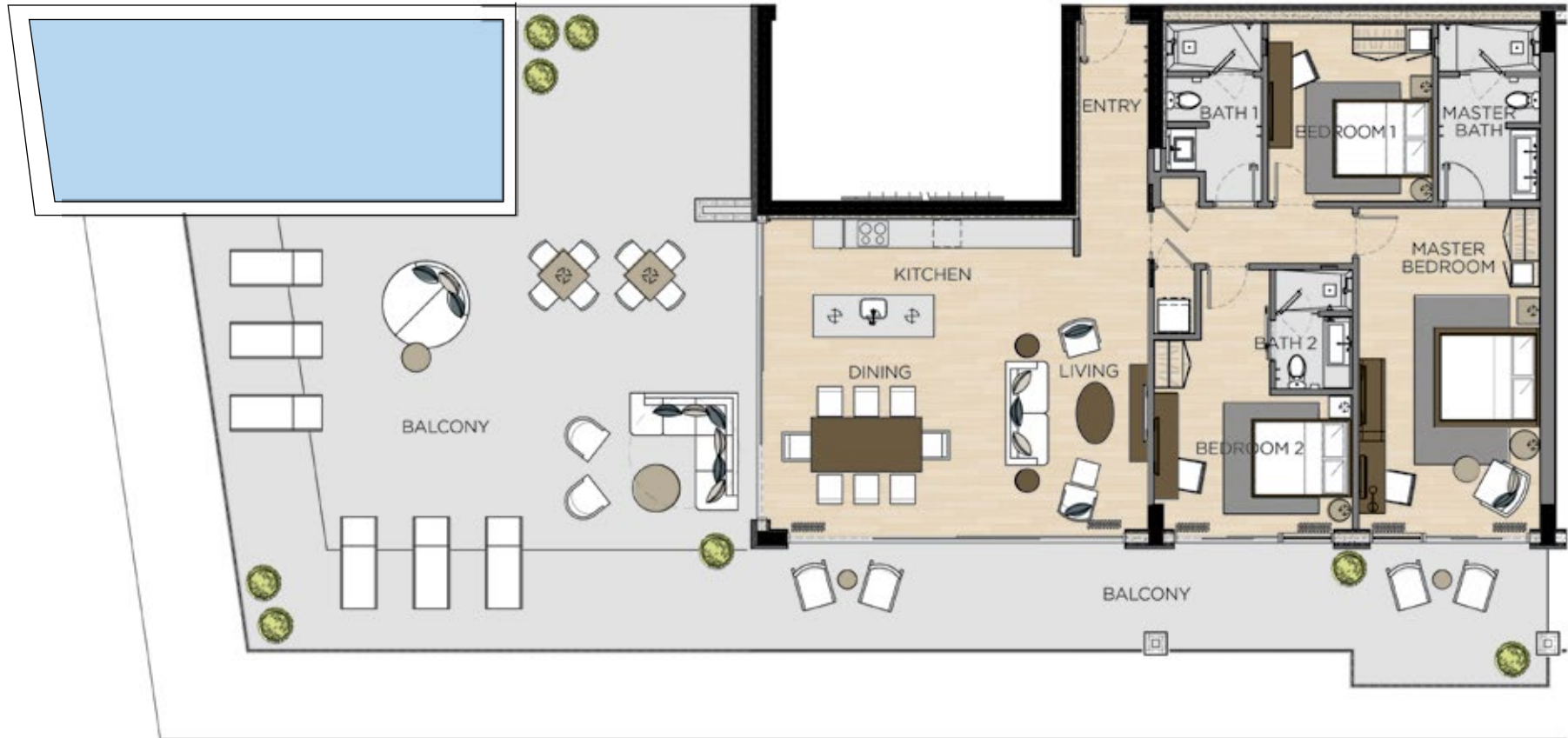
The Royal Palm penthouse is without exception, the most impressive floorplan in the entire hotel and is ideal for those discerning residents who wish to experience the ultimate in oceanfront luxury. Situated on the upper floors, the views from almost every room are breathtaking and unforgettable.

Versions 1 and 3 feature a private pool that provides a cool escape from the glorious Caribbean sun and your own oasis right outside the patio doors.

Indoor and outdoor living is seamlessly integrated with extremely spacious terraces. This exceptional space lets you dine al fresco any time, enjoying the warmth of the day or the incredible sunsets at night.



# ROYAL PALM PENTHOUSE WITH POOL 1



\*Furniture not included in full-time residences. For illustrative purposes only.

## ROYAL PALM PENTHOUSE 2



\*Furniture not included in full-time residences. For illustrative purposes only.

### ROYAL PALM PENTHOUSE WITH POOL 3

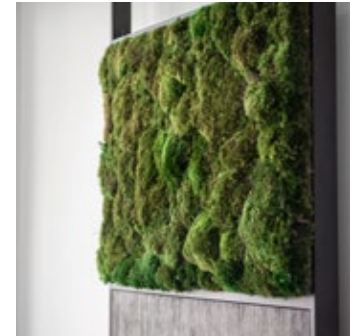


\*Furniture not included in full-time residences. For illustrative purposes only.

# DESIGN THAT INSPIRES

---

A fusion of contemporary and organic elements inspires Kailani's design and embodies the unique culture of the Caribbean islands it calls home. This balance between natural materials and eclectic architecture, cuisine and programming create a one-of-a-kind experience that feels authentic to the locale.







# CONTACT

---

For more information on investment opportunities, please contact:

**Tania Knapik**  
**Sales & Marketing Manager**

tknapik@ncbgroup.ky  
+1 345 623 9641  
ncbgroup.ky

KAILANI  
GRAND CAYMAN





CURIO  
COLLECTION  
BY HILTON™



All imagery is representative and for illustration purposes only. All floorplans are representative, subject to change without notice and subject to final planning approval.  
All hotel amenities described are subject to change without notice and subject to final planning approval.

"Curio" is a registered trademark of Hilton International Holding LLC, an affiliate of Hilton Worldwide Holdings Inc. ("Hilton"). The Residences are not owned, developed, or sold by Hilton and Hilton does not make any representations, warranties or guaranties whatsoever with respect to the Residences. The Developer uses the Curio brand and certain Curio trademarks (the "Trademarks") under a limited, non-exclusive, non-transferable license from Hilton. The license may be terminated or may expire without renewal, in which case the Residences will not be identified as a Curio branded project or have any rights to use the Trademarks.